

SUBJECT:	NUMBER: HTG-24-002
Reversing the direction of a Hyper9 from CCW to CW	DATE: July, 2024
	PRODUCT: Hyper9

PURPOSE

Instructions for reversing the direction of the Hyper9 using only the software in SmartView

AFFECTED PRODUCTS

Hyper9 Low Voltage 100 and High Voltage 144

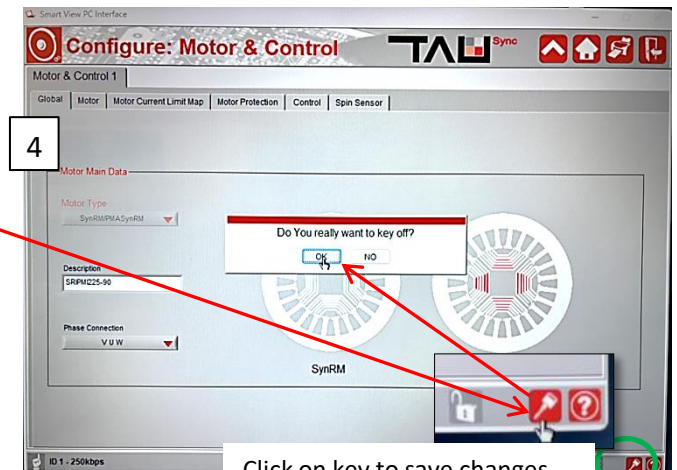
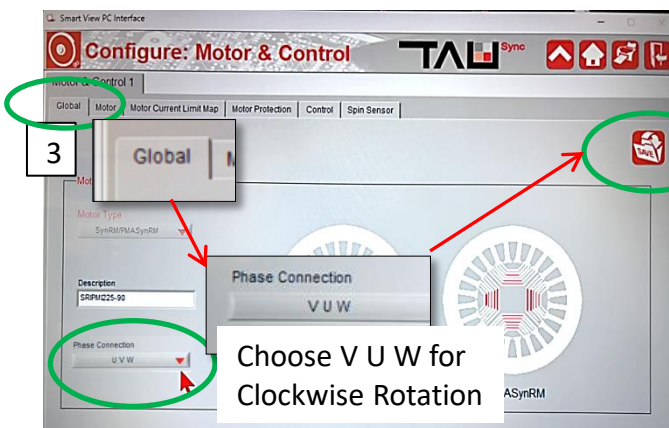
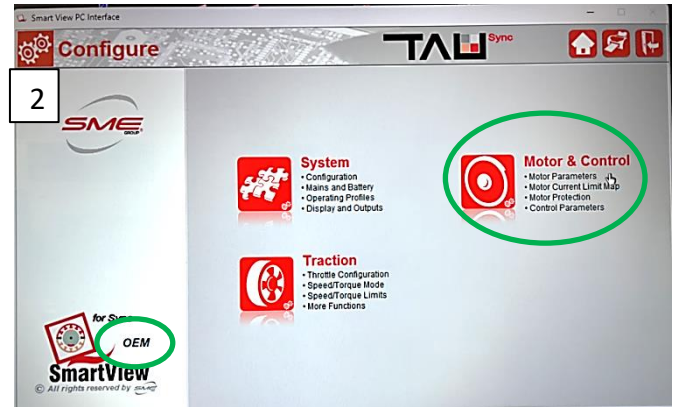
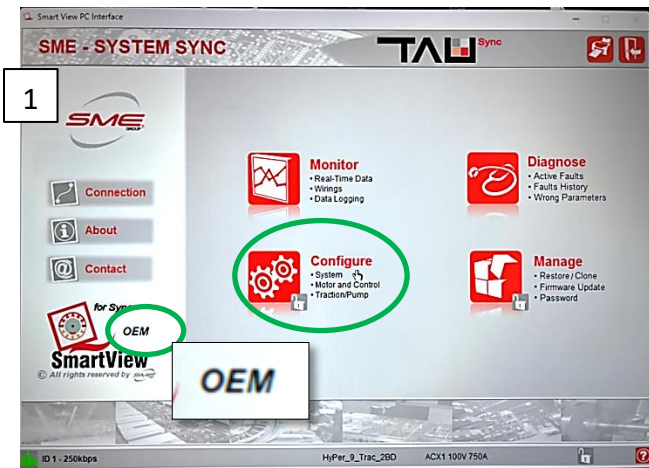
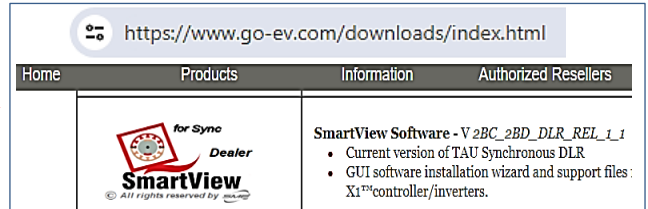
RECOMMENDED TOOLS

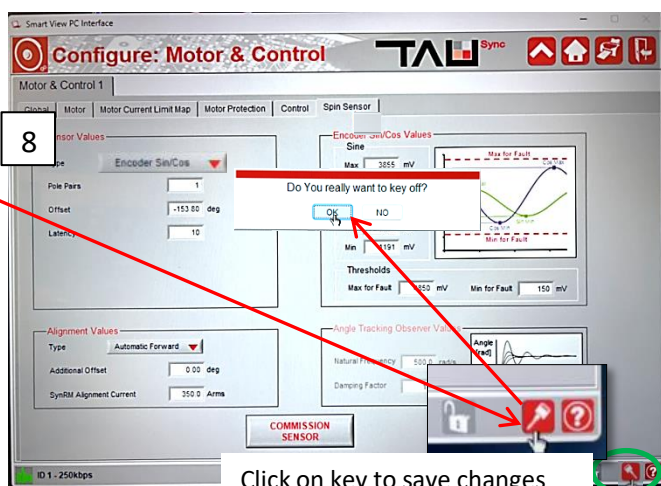
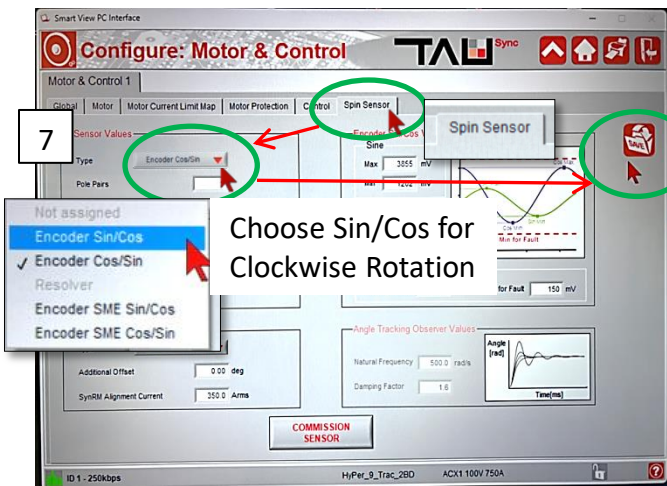
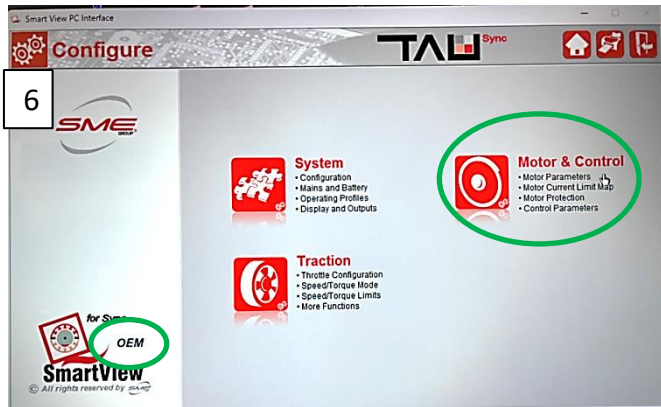
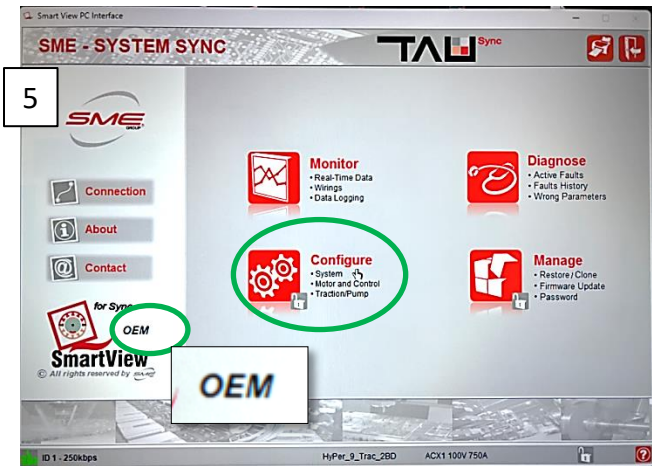
Laptop or PC with SmartView Dealer and SmartView OEM
Programming cable comes with motor

PARTS LIST

No parts are needed, changes are all software

PROCEDURE Start with OEM version of SmartView



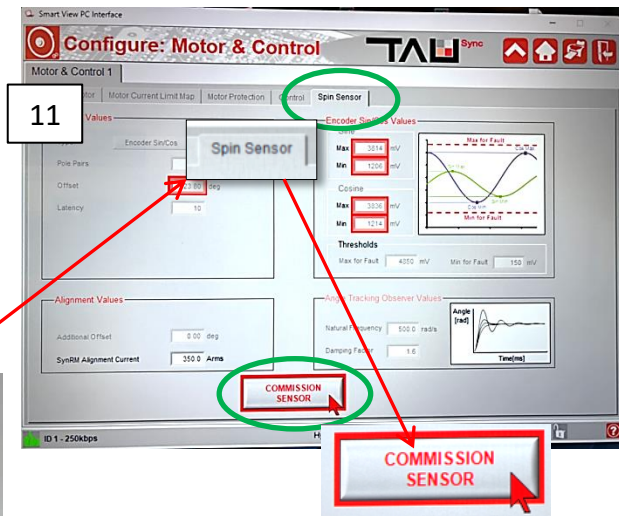


Click on key to save changes and complete required restart

Go to Dealer version of SmartView



Complete process within 60 seconds



The information contained in this bulletin is subject to change. The information is deemed reliable, but not guaranteed. Due to the many configurations of electric vehicles, your device may have different conditions including being the wrong device for the application. For the latest updates, visit evwest.com. If you are uncertain about this procedure and purchased your device from EV West, contact support@evwest.com. Otherwise, contact your retailer or the manufacturer via their website.