



product page

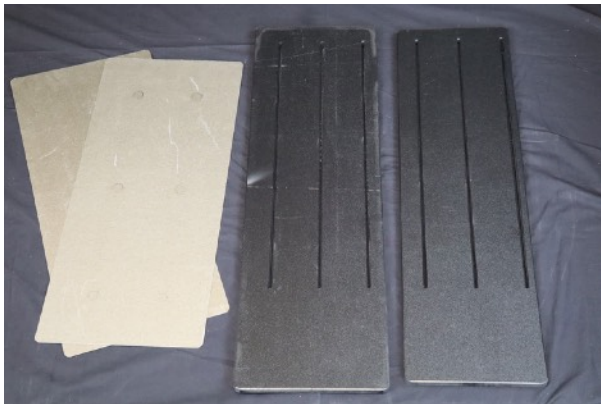
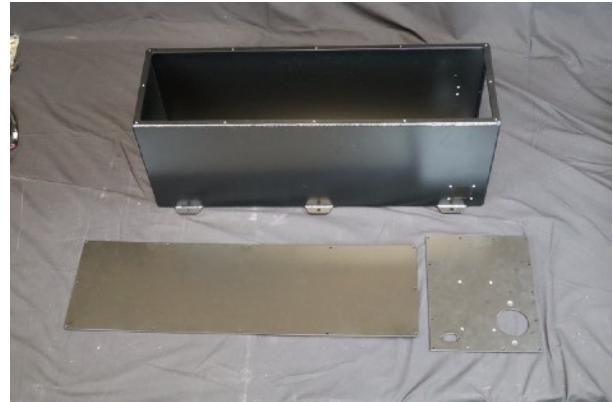


# Installation Guide

## Beetle Rear Battery Box



Thank you for purchasing the EV West rear beetle box enclosure! We appreciate your trust in our products and are excited to be part of your electric conversion journey. Attached, you'll find the installation instructions for assembling your beetle battery box. These instructions will help guide you through the process, ensuring a smooth and efficient installation. If you have any questions or concerns, please feel free to email us at [support@evwest.com](mailto:support@evwest.com) or call us at **888-591-5830**.



### Collect parts needed

- Rear battery box
- Rear battery box lid
- Rear battery box side panel
- MX150
- Amphenol connector
- ABS spacers
- Mica battery module separators
- 90 degree battery collector adaptors
- BMS and BMS tester
- Fuse holder
- Fuse
- Maintenance switch
- 2/0 cable
- 2/0 cable eyelets
- Heat shrink
- Hardware for mounting components
- Anti corrosion compound



Prepare battery modules by applying anti corrosion compound to battery connector.



Attach 90 degree adaptors.



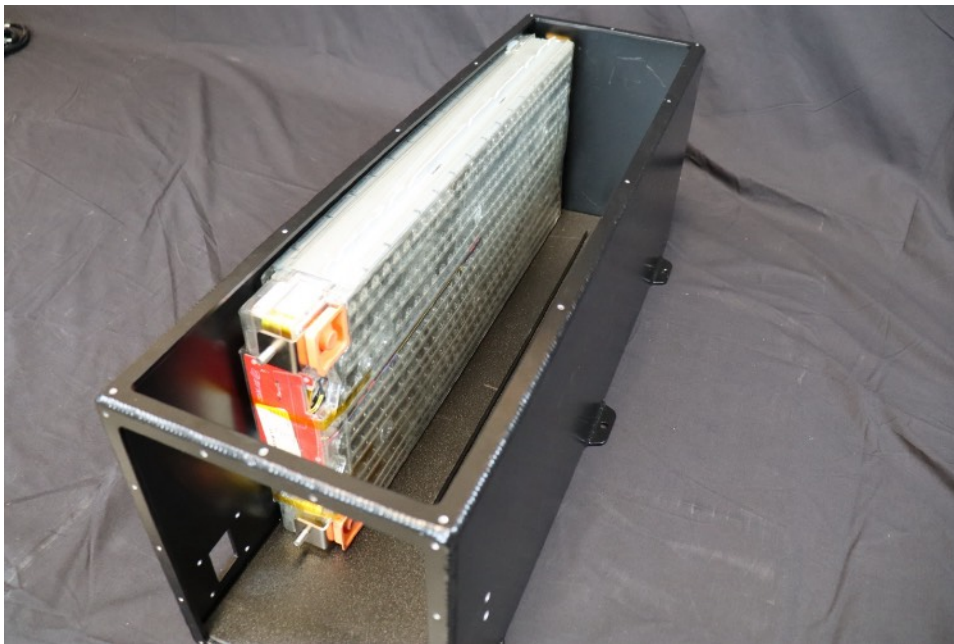
Torque to 10 Newton meter. Repeat for all six battery connectors.



Install lower ABS spacer.



Install lower ABS spacer.



Install front battery. Note the direction of battery collectors.



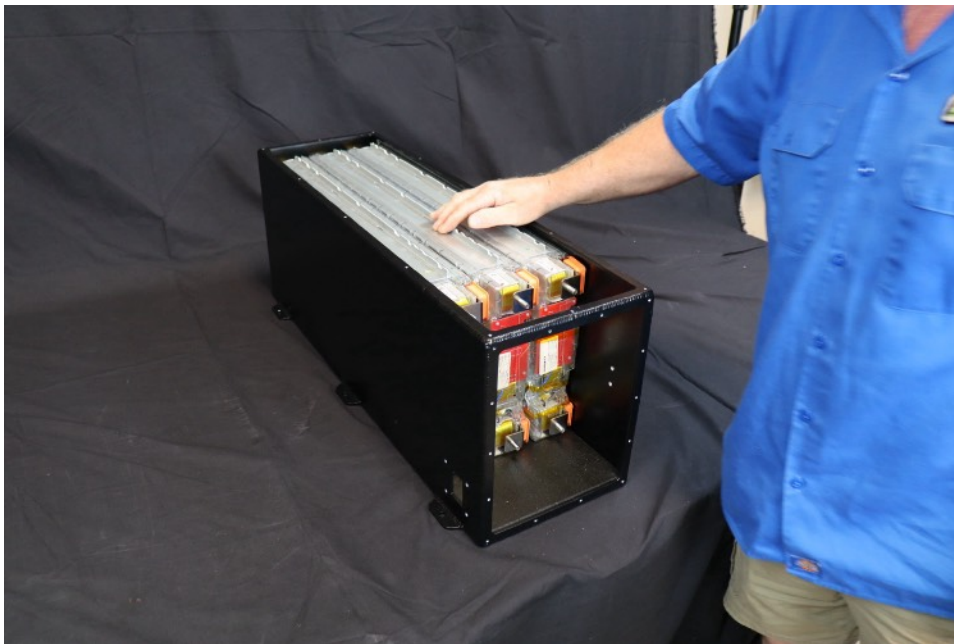
Install rear battery.



Install rear battery. Note the direction of battery collectors.



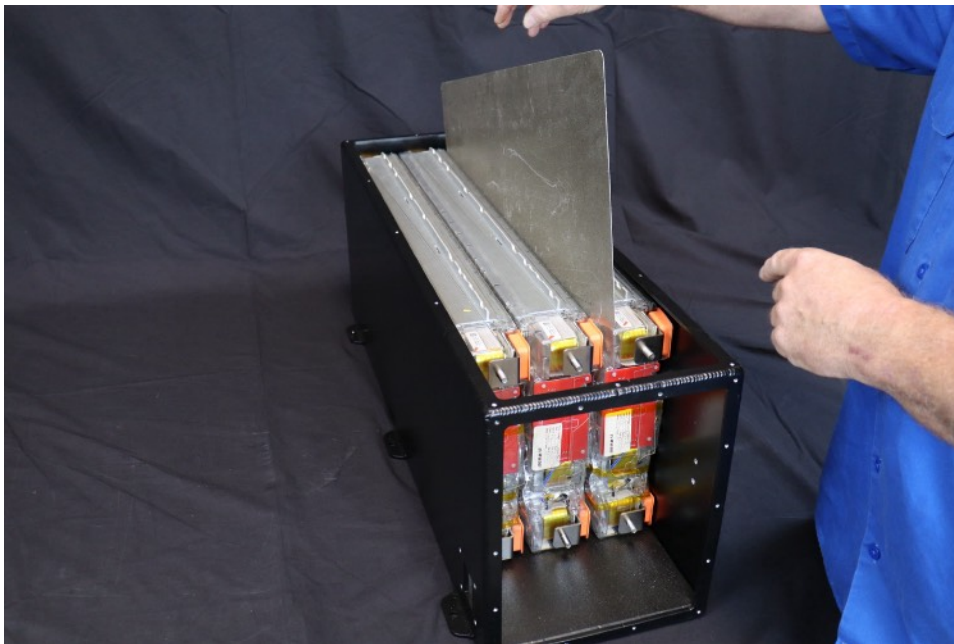
Install middle battery.



Install middle battery. Note the direction of battery collectors.



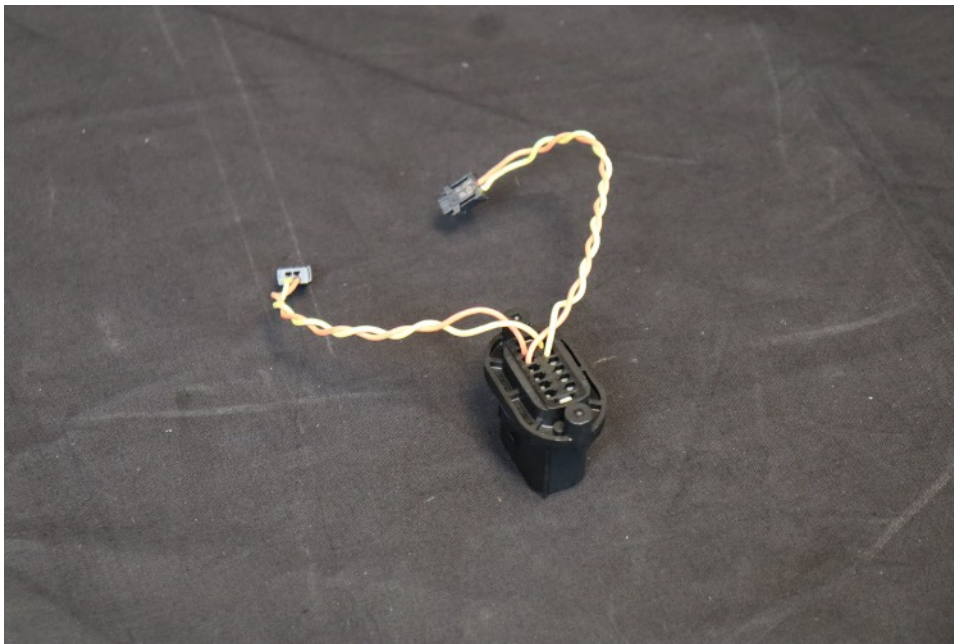
Install middle battery.



Install mica sheets between batteries.



Install mica sheets between batteries.

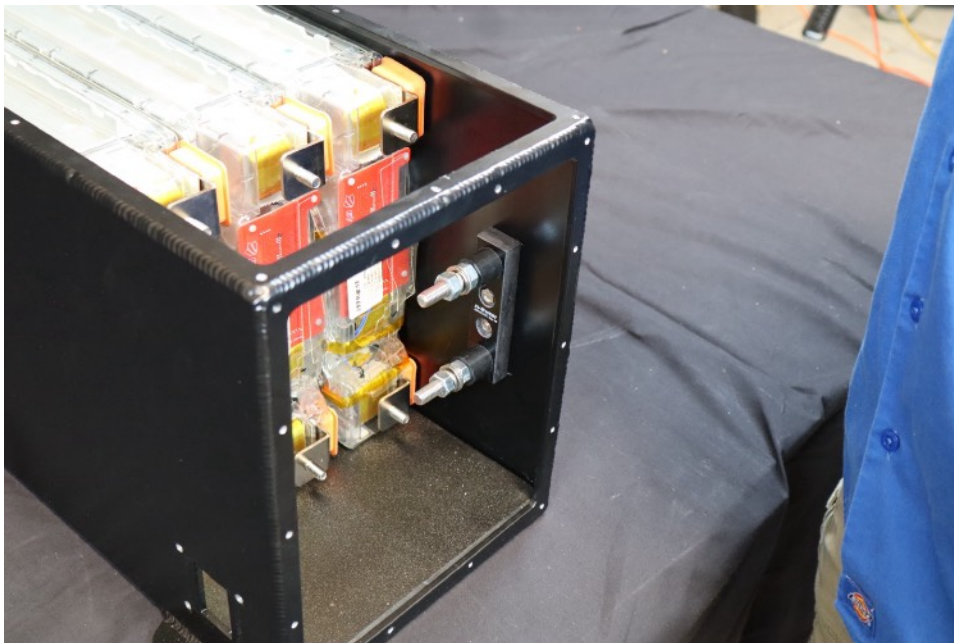


Prepare MX150

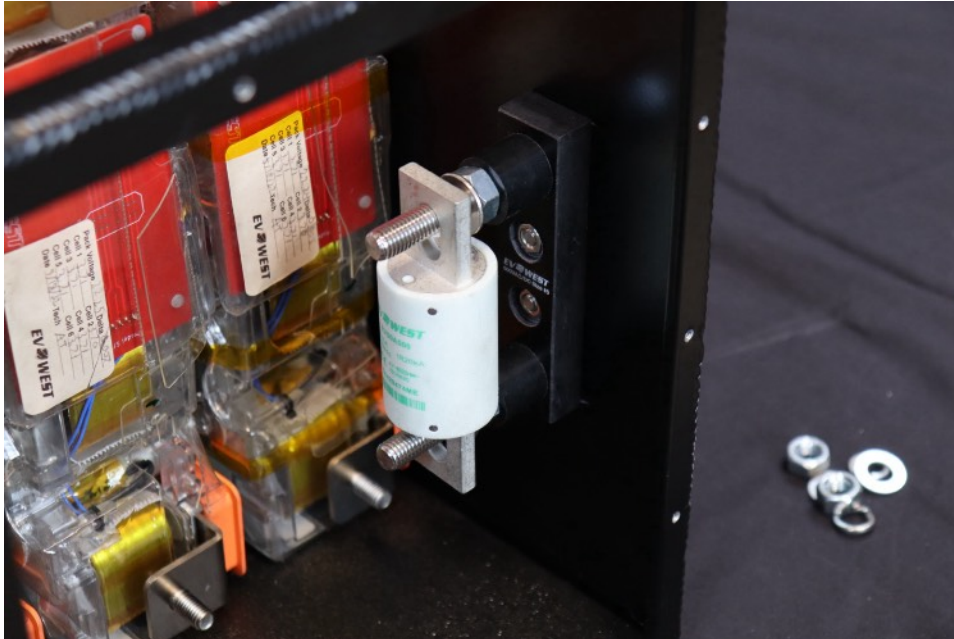
- Install four pins for IsoSPI connections.
- Document location and function of pins.
- Leave wires long enough to reach BMS IPO and IMO ports.
-



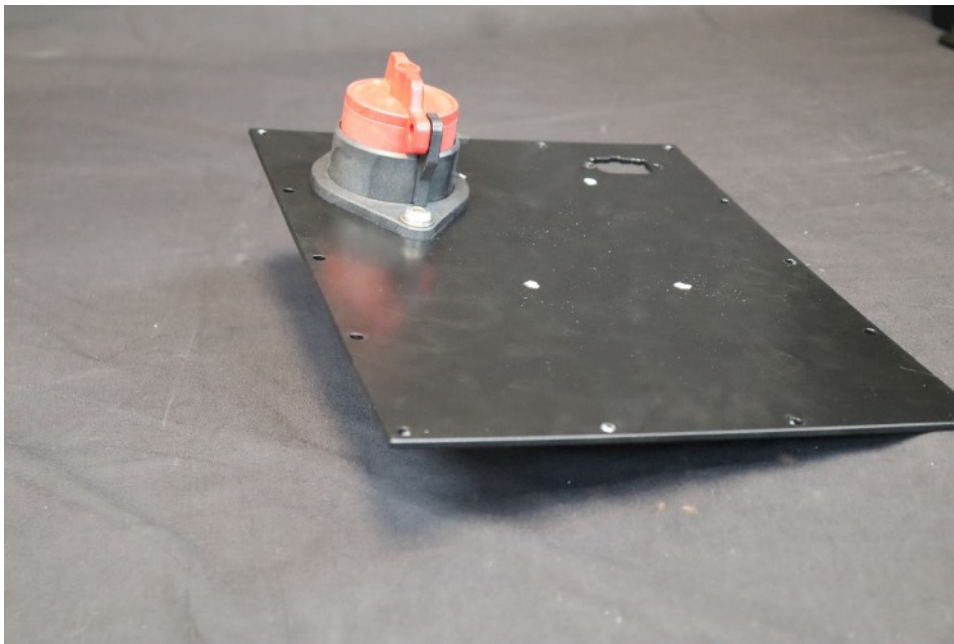
Mount fuseholder to rear side of box.



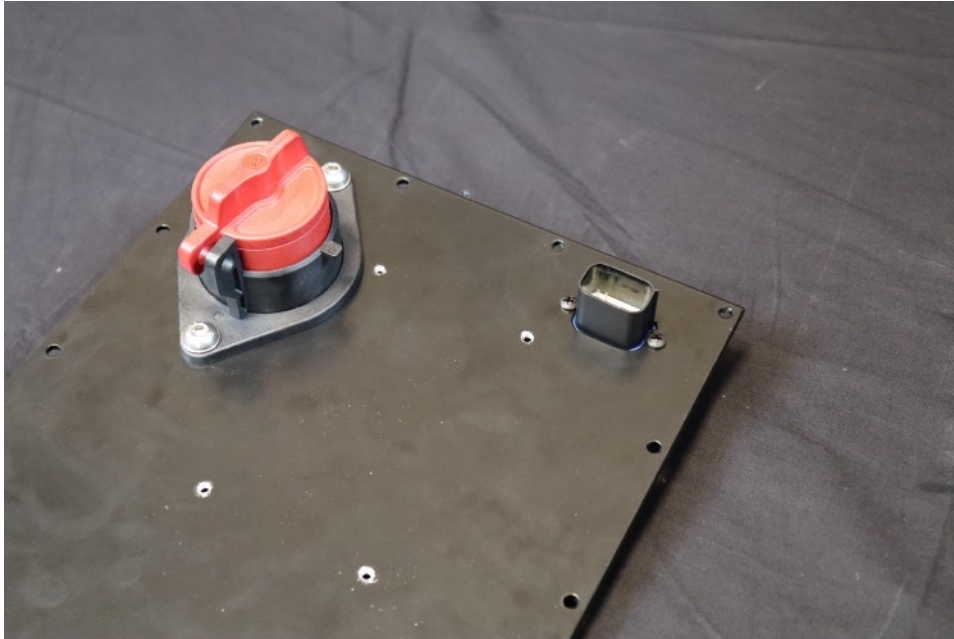
Mount fuseholder to rear side of box.



Install fuse.



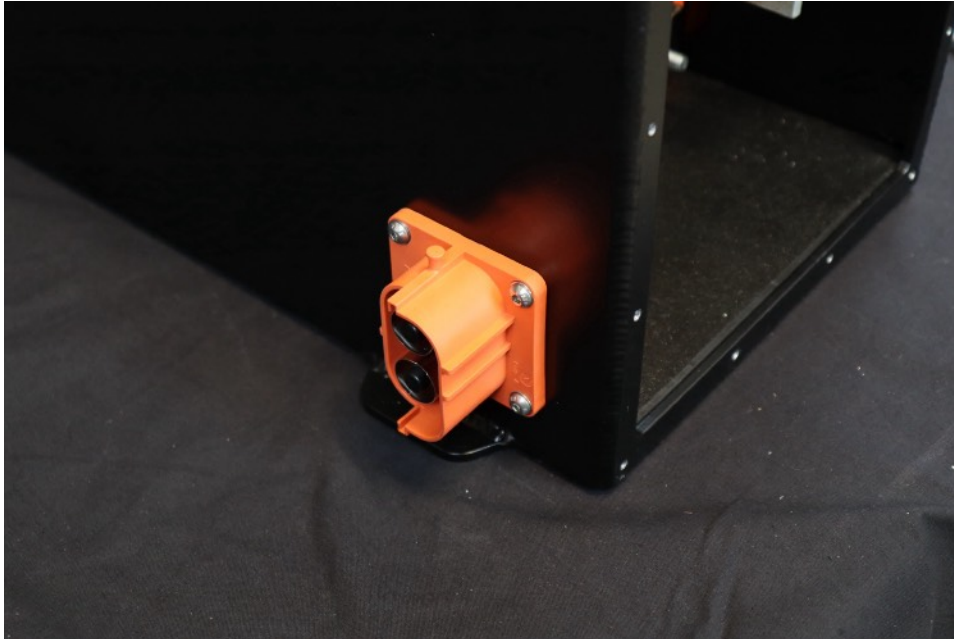
Mount maintenance switch to side panel.



Mount MX150 to side panel.



Mount BMS module to side panel. Leave clearance for fuse. Plug in IMO/IPO and IMI/IPI.



Install Amphenol.



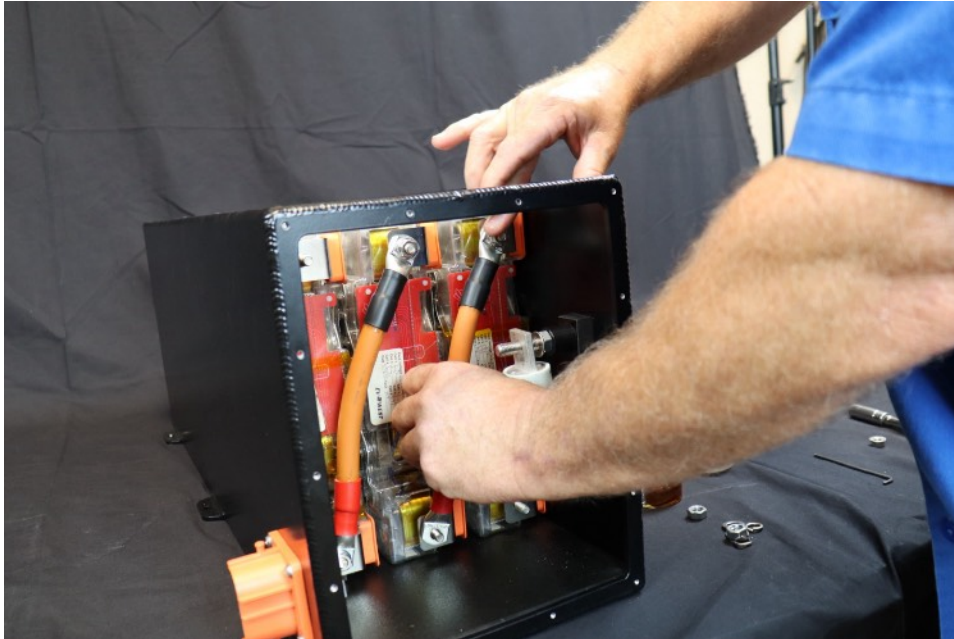
Prepare interconnect cables by applying anti corrosion compound.



Install interconnect cable front battery positive to middle battery negative.



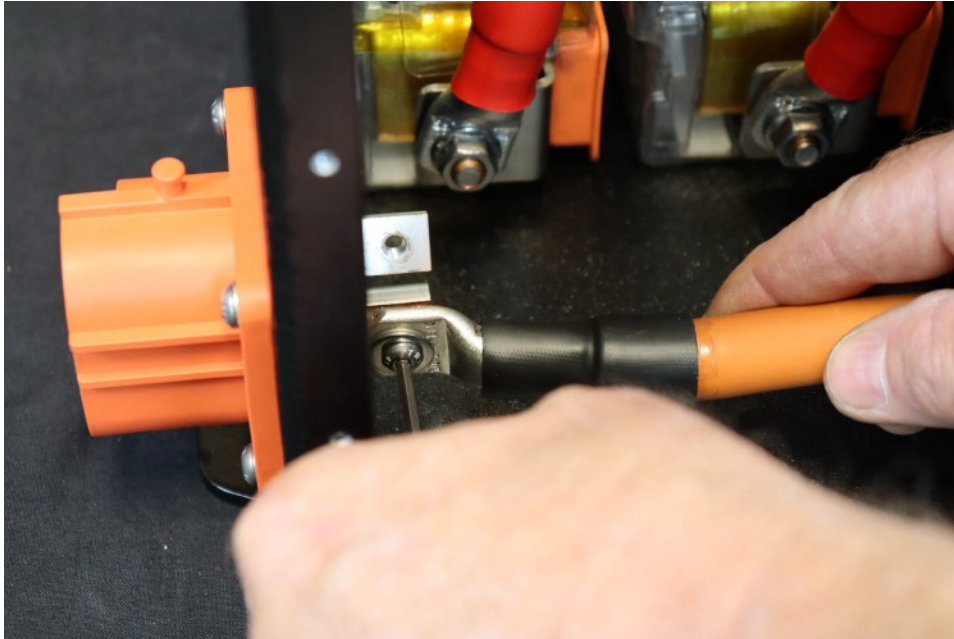
Install interconnect cable, middle battery positive to rear battery negative.



Install final interconnect cable, middle battery positive to rear battery negative.



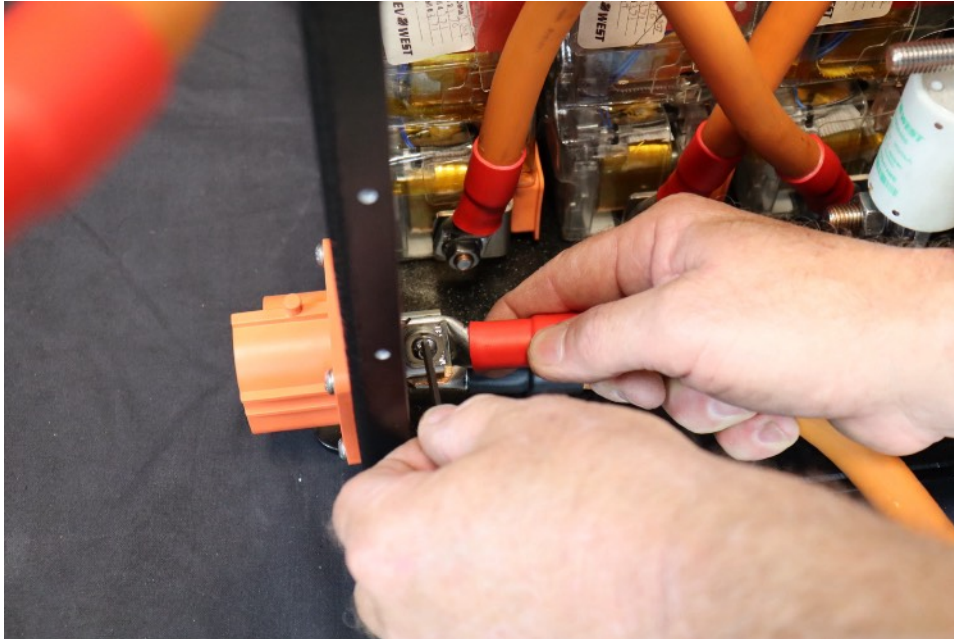
Install interconnect cable, from rear battery positive to the maintenance switch.



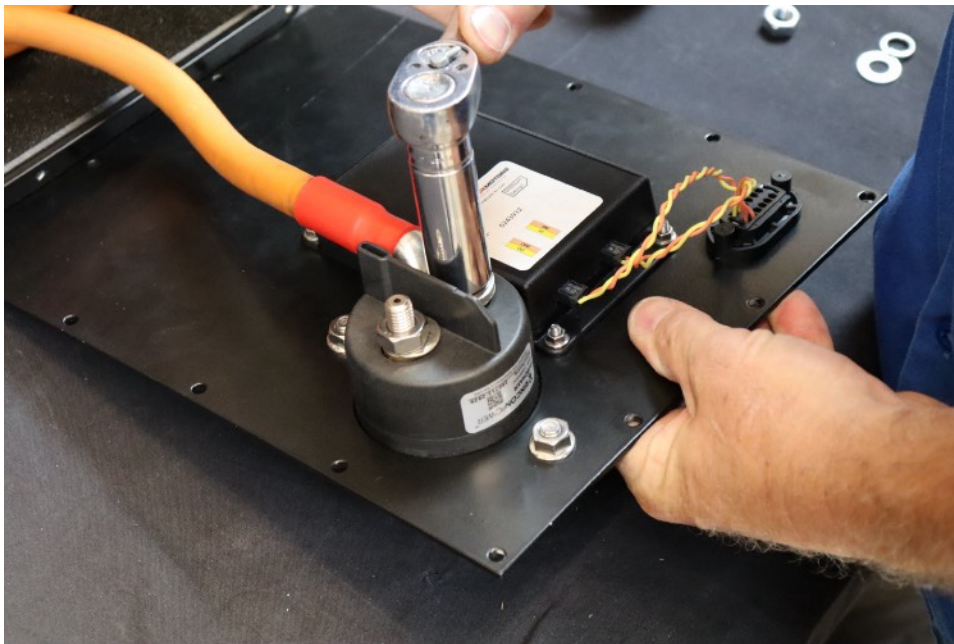
Install Amphenol negative cable.



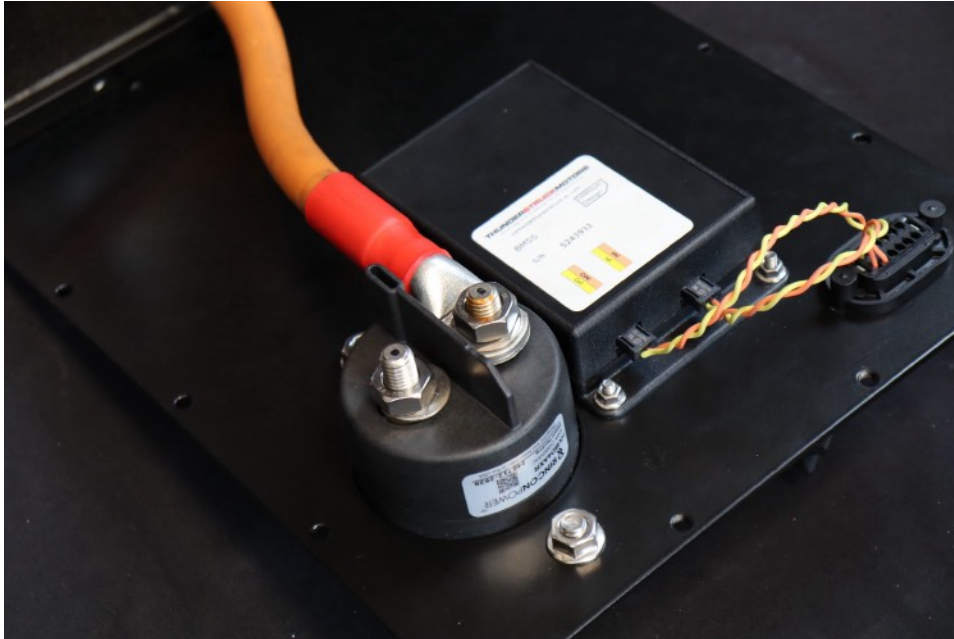
Install Amphenol Negative cable to the fuse holder.



Install Amphenol positive cable.



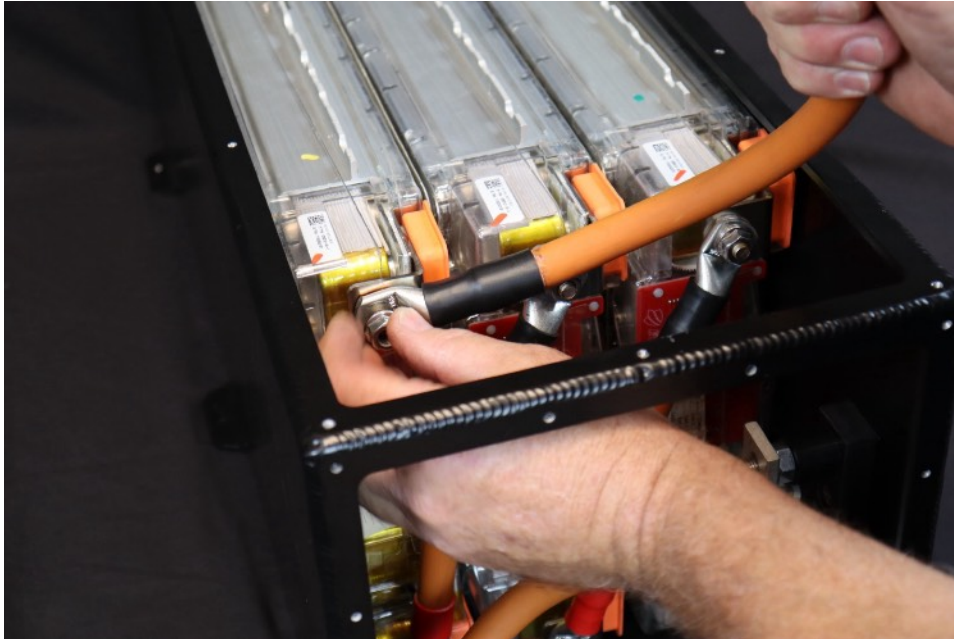
Install Amphenol positive cable to the maintenance switch. Note terminal connection.



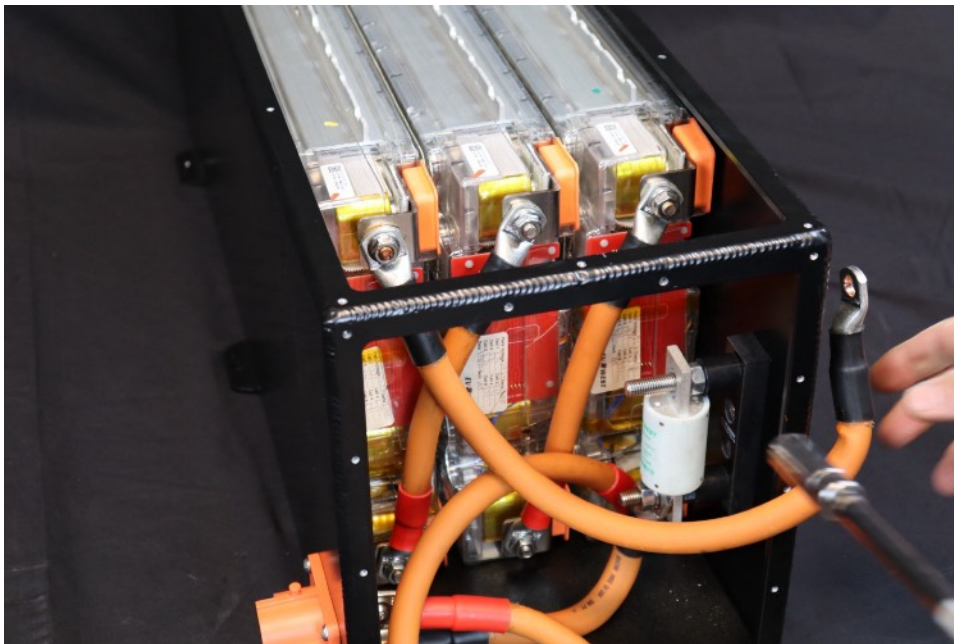
Install Amphenol positive cable to the maintenance switch.



Install the battery positive cable to the maintenance switch.



Install front battery negative cable.



Twist cable into cork screw show in order to connect to the fuse holder.



Connect front battery negative cable to the fuse holder.



Note: Twist for clearance.



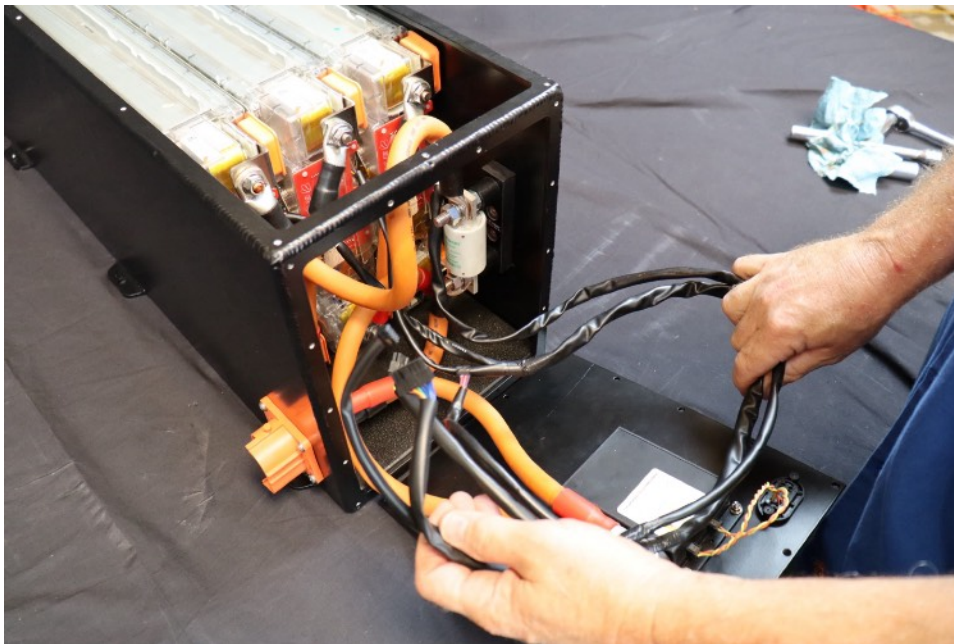
Plug in front battery BMS.



Plug in middle battery BMS.



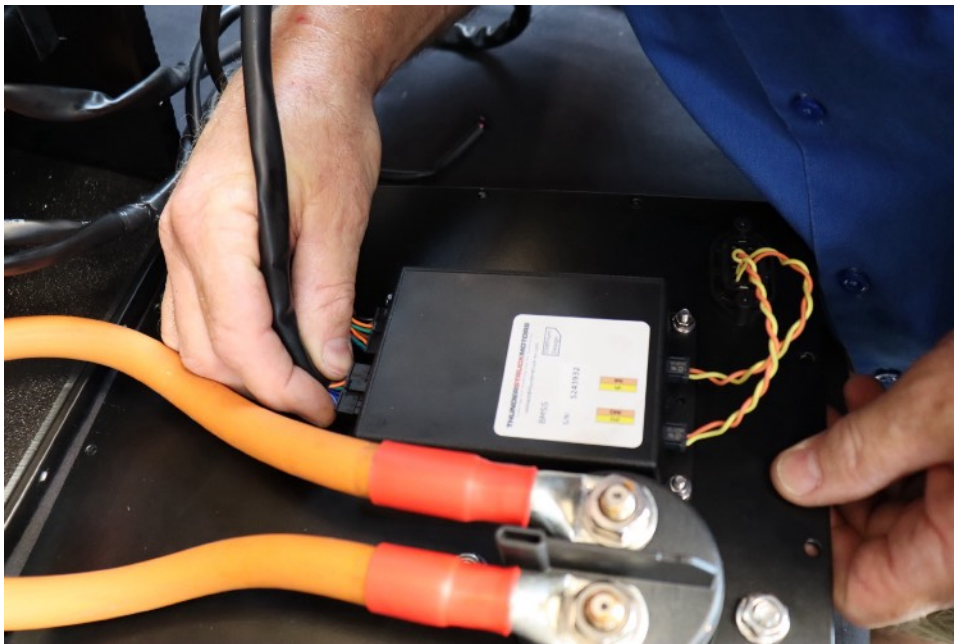
Plug in rear battery BMS.



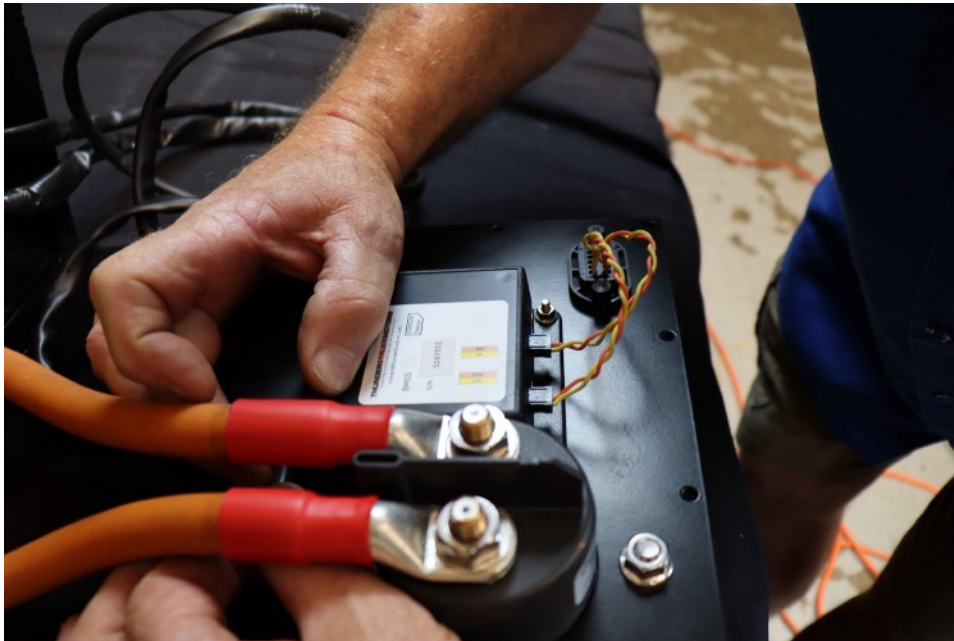
Verify correct cell taps with provided BMS tester before plugging BMS cables into LTC. Route the three connected BMS harnesses.



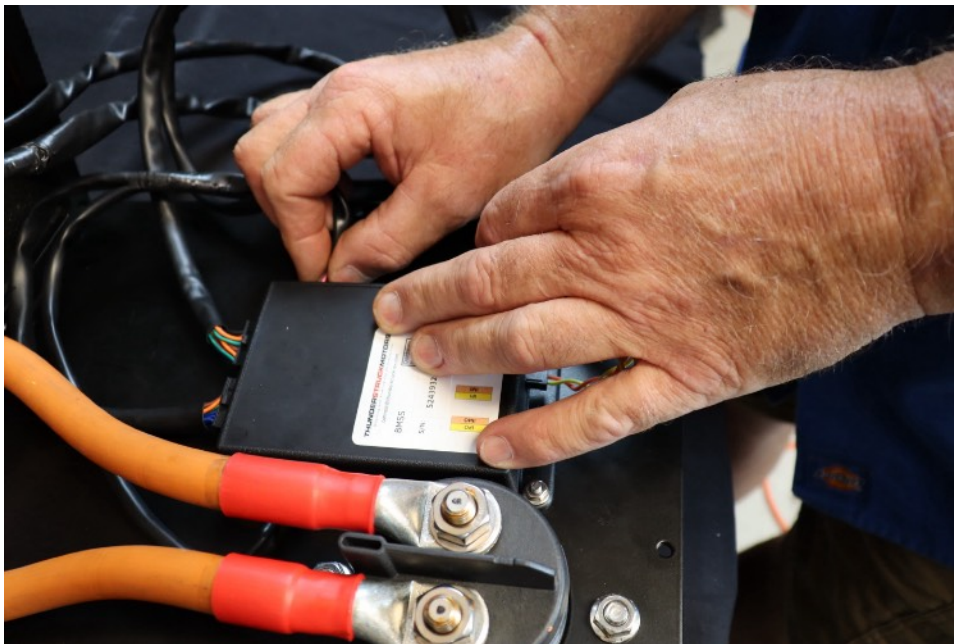
Plug BMS into LTC.



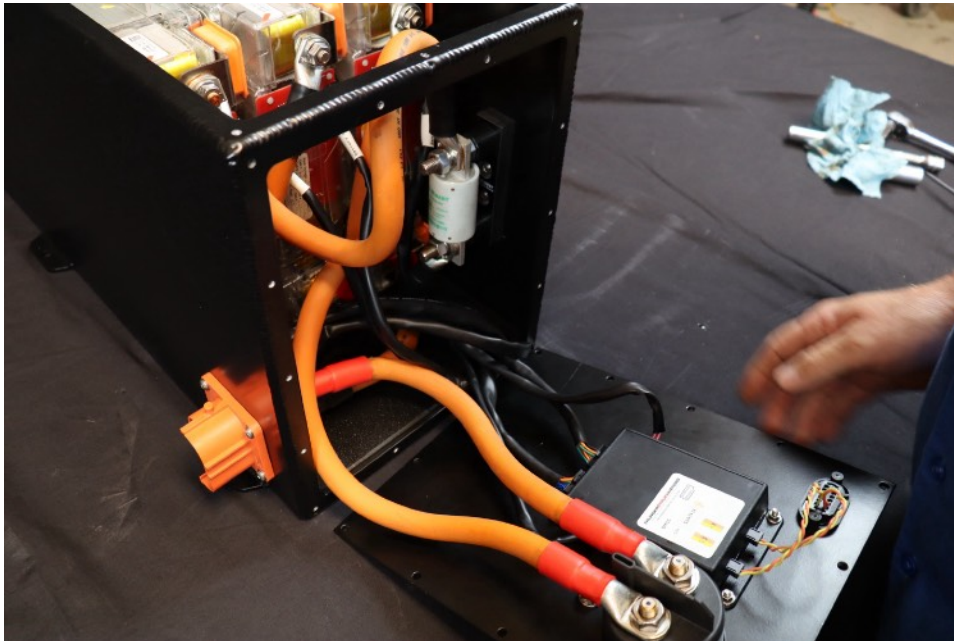
Plug BMS into LTC.



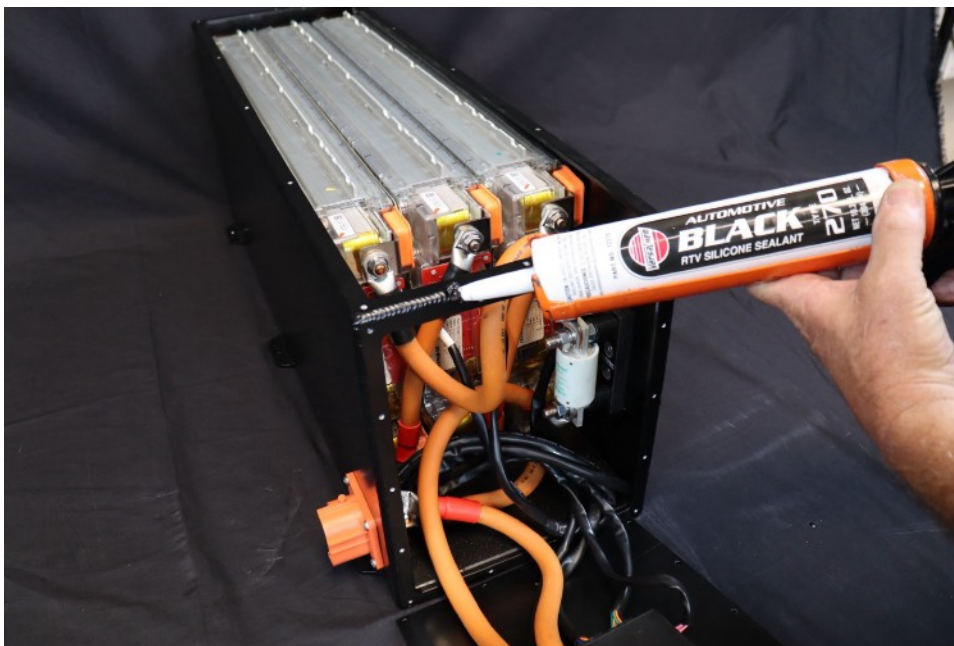
Plug in thermistors.



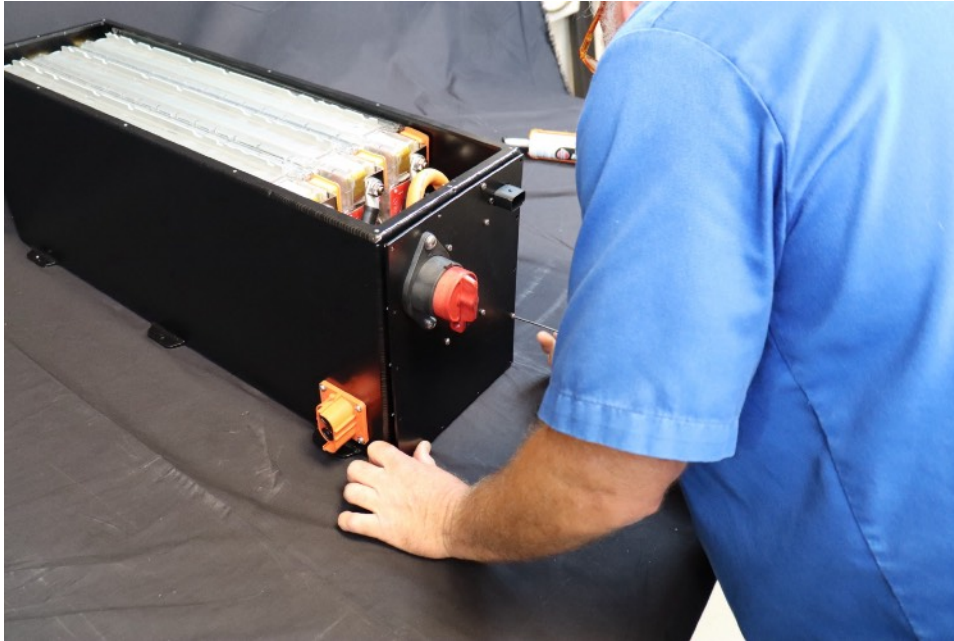
Plug in thermistors.



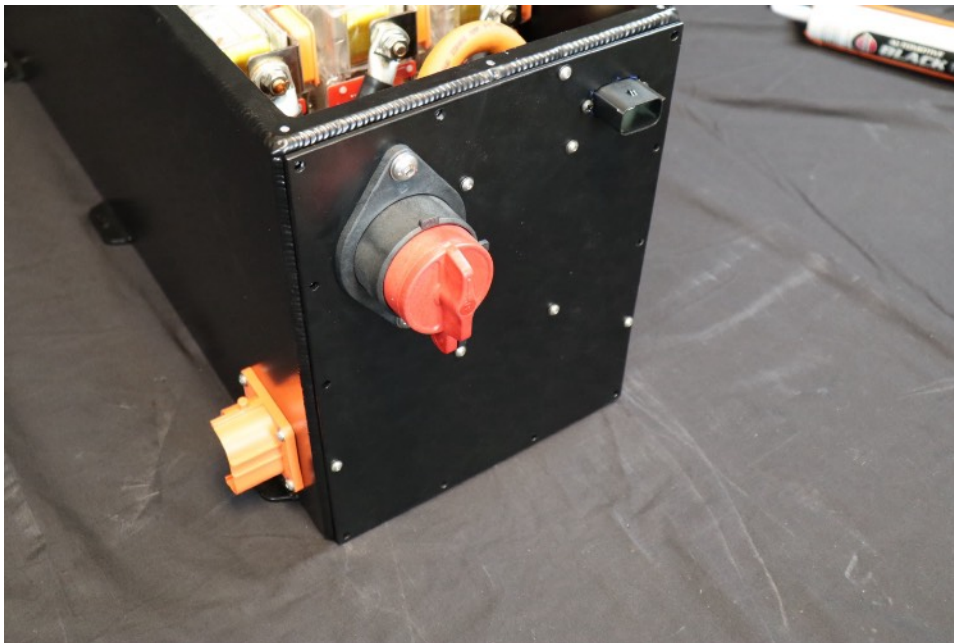
Completed side panel.



Apply RTV to battery box side flange.



Install side panel.



Install side panel.



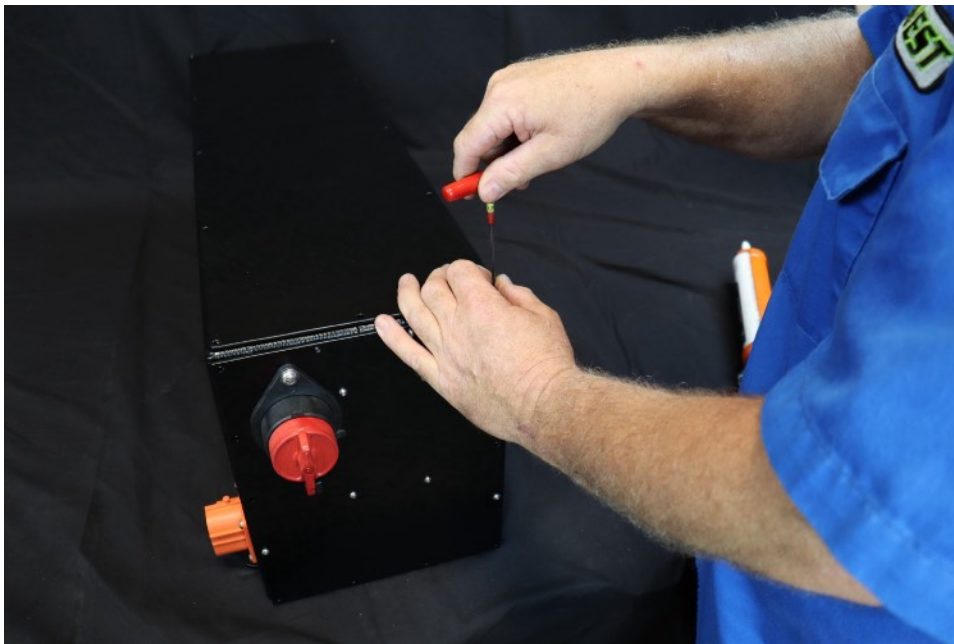
Install top ABS panel.



Install top ABS panel. Ensure flanges are seated.



Apply RTV to battery enclosure.



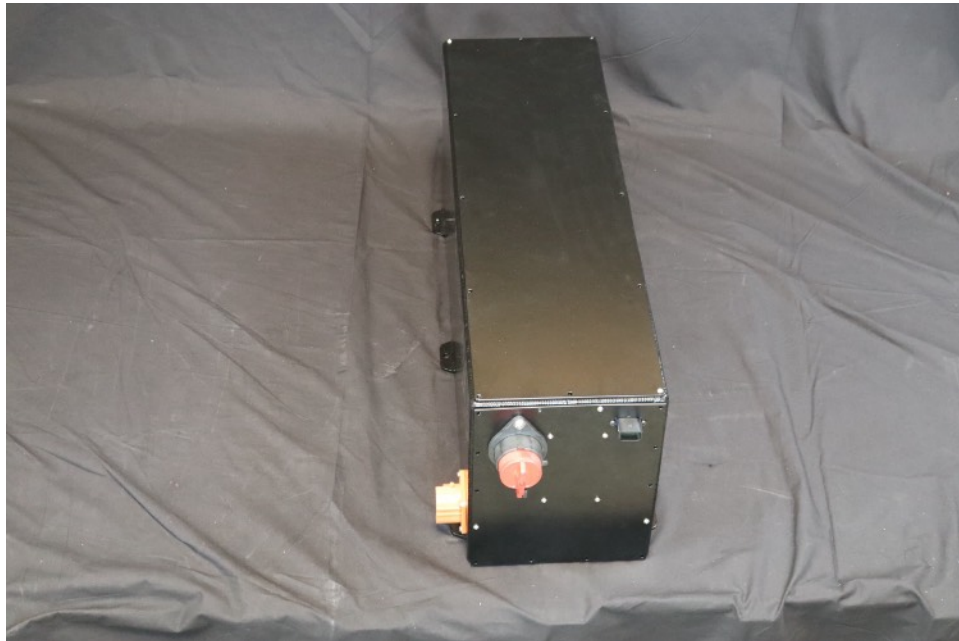
Install lid.



Install lid.



Completed battery enclosure.



Congratulations! You have just completed the assembly of your rear beetle battery box—great work! This is an important conversion, and we're thrilled to be part of your build.

If you have any questions or concerns as you move forward with your project, please don't hesitate to email us at [support@evwest.com](mailto:support@evwest.com) or call us at **888-591-5830**. We're here to help make your conversion a success from start to finish.