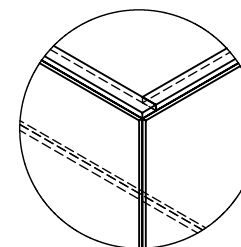
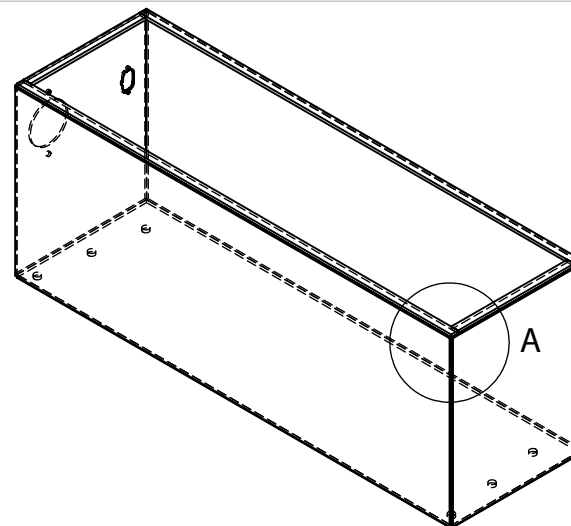
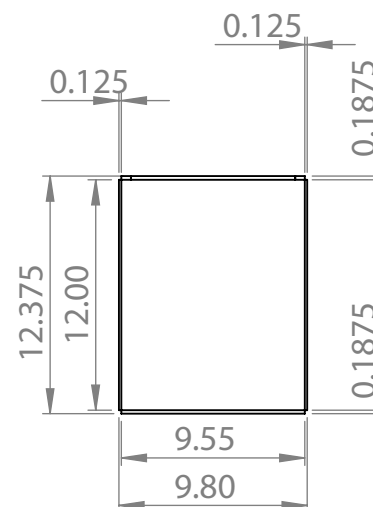
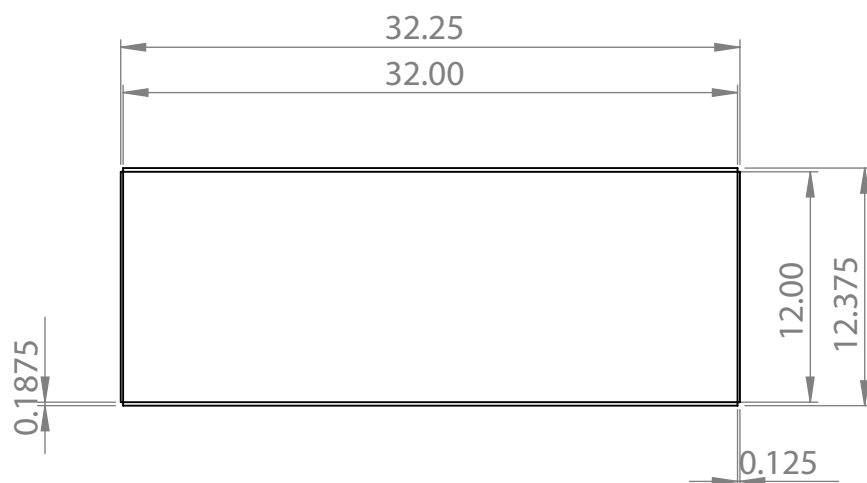


1/2" x 3/16" thick welded flange around perimeter on inside, see Detail A



DETAIL A
SCALE 1 : 5



PROPRIETARY AND CONFIDENTIAL
THE INFORMATION CONTAINED IN THIS
DRAWING IS THE SOLE PROPERTY OF
EV West INC. ANY REPRODUCTION IN
PART OR AS A WHOLE WITHOUT THE
WRITTEN PERMISSION OF EV West INC.
IS PROHIBITED.

UNLESS OTHERWISE SPECIFIED:

DIMENSIONS ARE IN INCHES
TOLERANCES:

MATERIAL
Aluminum

FINISH

Aluminum

DO NOT SCALE DRAWING

NAME	DATE	TITLE:	
DRAWN Spencer Larue	4/2/19	Late Beetle Rear Box Tesla S	
CHECKED	COMMENTS:	DWG. NO.	REV
	Base and Flange are 3/16" Aluminum, All else is 1/8"	Rear_Box_Late	B
	Phone (707) 217 6204	SCALE: 1:10	WEIGHT: SHEET 1 OF 1